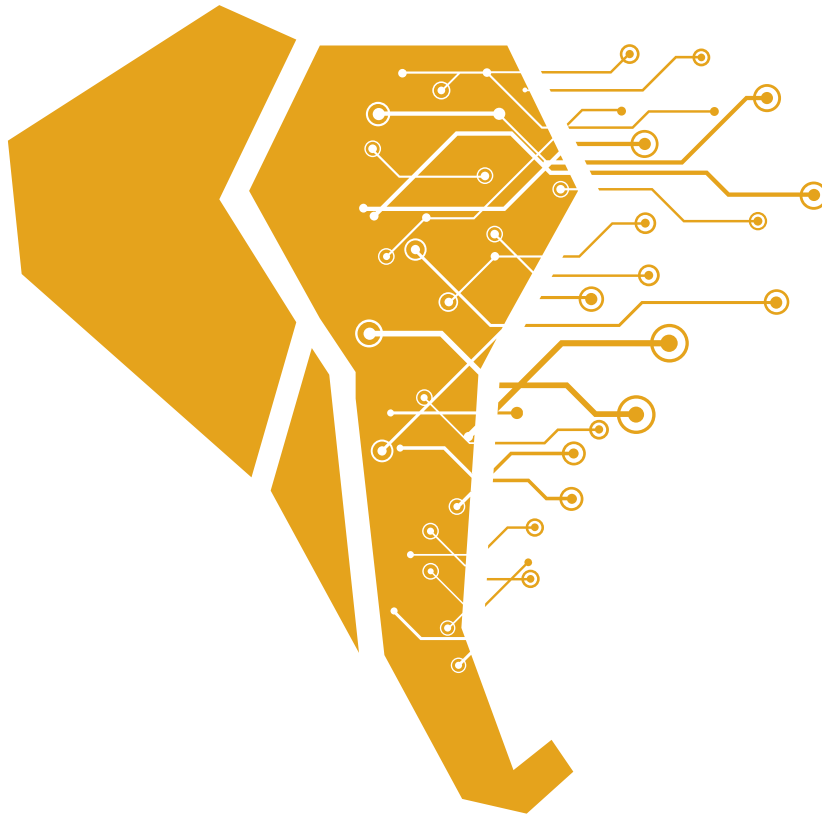
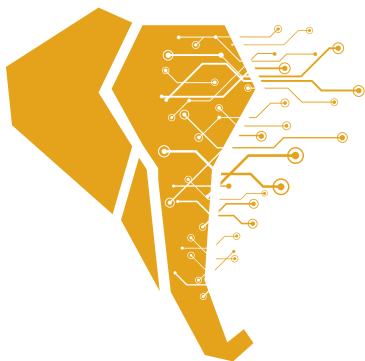


# CRYPTO ELEFUND

# FIRST CLASS CRYPTOCURRENCY





## CRYPTO ELEFUND

is a project focused on key segments of the Bitcoin ecosystem, which we first build in the Czech market and then scale and expand globally.



**TAŤÁNA TURKOVÁ**

[ceo@cryptoelefund.com](mailto:ceo@cryptoelefund.com)

[www.cryptoelefund.com](http://www.cryptoelefund.com)

**Headquarters:** PRAHA and OLOMOUC



## ANNA FUND

is a professional AI-driven crypto investment fund based in Gibraltar, utilizing **three mutually independent and time-tested** trading algorithms.

Thanks to its strategically chosen location in Gibraltar—a jurisdiction favorable in terms of taxation, structure, and cryptocurrency regulation—the fund **effectively manages digital assets for clients** worldwide.

Its long-term goal is to expand its range of services to become a reliable partner for retirement and housing savings for retail investors.

---

ceo@cryptoelefund.com  
cryptoelefund.com

# TEZIMBITCOIN.CZ

We specialize in the **professional operation of turnkey mining farms**, providing services to both individual clients and companies—including the design and production of custom mining containers with their own logos and branding elements.

Our flagship project is a **proprietary farm with a capacity of 70 BTC per year**, followed by four additional facilities, planned to reach a **total output of 400 BTC annually**.



---

ceo@cryptoelefund.com  
cryptoelefund.com



## HouMR

(Currently in development) – An innovative solution for affordable housing: users regularly save in Bitcoin while also **owning a Bitcoin mining machine**.

It functions similarly to **housing** or **retirement savings**. The generated BTC significantly increases savings, enabling clients to obtain a traditional mortgage.

As the next step, we plan to introduce **Bitcoin mortgages**, making the path to homeownership even more accessible.

---

ceo@cryptoelefund.com  
cryptoelefund.com



# SANTA SOFIA TEXAS

**Santa Sofia** is a modular Bitcoin mining farm in Texas with an installed power capacity of 6 MW and 1,090 water-cooled machines, each delivering 400 TH/s. The farm's annual output is approximately **70 BTC**, with the equipment lifecycle planned at 5 years.

Thanks to its modular architecture, the farm allows for gradual expansion up to **5,000 mining machines**, which, at current parameters, would generate **up to 1,700 BTC over 5 years**.

The goal of this project is to create a **self-sustaining foundation for an investment fund of 1,000 BTC**, serving as a key pillar for Bitcoin mortgages, retirement, and housing savings, as well as a technological model for a **blockchain-based insurance company**.

This model has the potential to fundamentally transform the financial market, not only in the Czech Republic but, thanks to its robustness and proven performance, it can also be successfully exported to the **USA and China**.



ceo@cryptoelefund.com  
cryptoelefund.com



## SPOLEK BERLIČKA

**Berlička** represents the heartbeat of our activities, where empathy meets professional support for those facing life's toughest challenges.

As a **non-profit organization**, we focus on helping children with serious illnesses, adults in terminal stages, and their families. We provide time, volunteers, and material support for home care to ease both physical and emotional burdens.

Berlička is not just a project—it is an integral part of our business activities and **embodies our life philosophy**: to help the most vulnerable, because we believe that true success is measured by the good we return to society.

---

ceo@cryptoelefund.com  
cryptoelefund.com





[WWW.CRYPTOELEFUND.COM](http://WWW.CRYPTOELEFUND.COM)

[info@cryptoelefund.com](mailto:info@cryptoelefund.com)